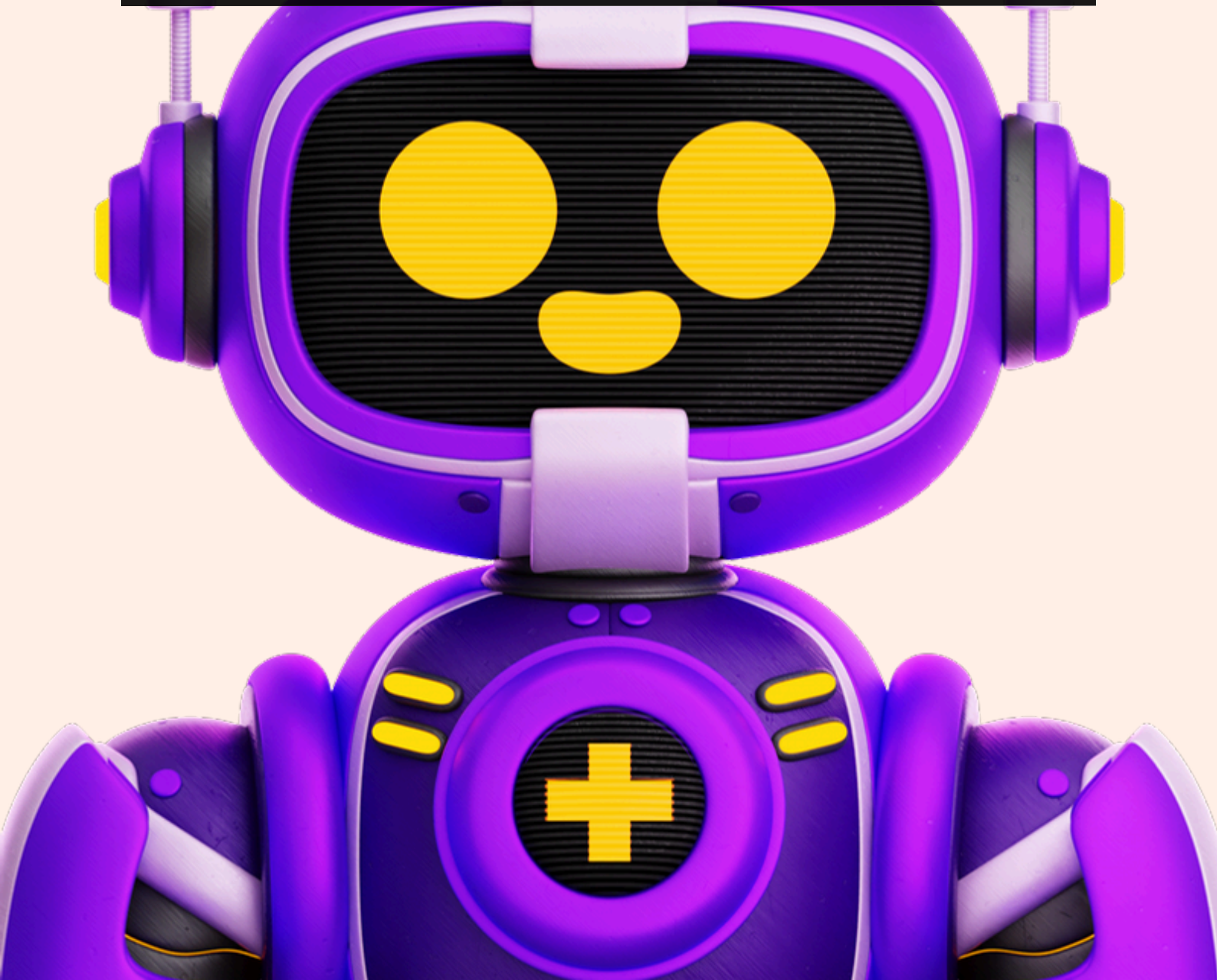


# THE BEGINNERS GUIDE TO USING CHAT GPT

How it works, what it can do, and  
how to use it effectively



A close-up photograph of a person's hands typing on a silver laptop keyboard. The background is slightly blurred, focusing on the hands and the keys. A large, semi-transparent yellow rectangle is overlaid on the center of the image, containing the title and subtitle text.

# **THE BEGINNERS GUIDE TO USING CHAT GPT**

How it works, what it can do, and  
how to use it effectively



# THE BEGINNERS GUIDE TO USING CHAT GPT

How it works, what it can do, and  
how to use it effectively



# CONTENTS

CHAPTER 1	<b>Introduction</b>
CHAPTER 2	<b>What is Chat GPT?</b>
CHAPTER 3	<b>How Chat GPT Works</b>
CHAPTER 4	<b>Understanding Chat GPT's Output</b>
CHAPTER 5	<b>How to Use Chat GPT Effectively</b>
CHAPTER 6	<b>Applications of Chat GPT</b>
CHAPTER 7	<b>Ethical Considerations</b>
CHAPTER 8	<b>Getting Started with Chat GPT</b>
CHAPTER 9	<b>Conclusion</b>

CHAPTER

1



INTRODUCTION





# Introduction

Chat GPT is an artificial intelligence language model developed by OpenAI. It uses deep learning techniques to generate human-like text based on a given input. Chat GPT has received a lot of attention in recent years because of its remarkable ability to generate coherent and contextually relevant responses to prompts.

This e-book, "The Beginner's Guide to Using Chat GPT," is designed to provide an overview of Chat GPT and its capabilities, and to guide readers through the process of using it effectively.

The e-book is divided into several chapters that cover different aspects of Chat GPT. In Chapter 2, we will provide a more detailed explanation of what Chat GPT is and how it works. In Chapter 3, we will cover how Chat GPT generates output and how to interpret its responses. Chapter 4 will provide tips and best practices for using Chat GPT effectively. Chapter 5 will explore the various applications of Chat GPT and how it can be used for different purposes.



In addition to discussing the capabilities and potential uses of Chat GPT, this e-book will also address ethical considerations when using AI language models. Chapter 7 will discuss these issues in greater detail and provide tips for responsible use of Chat GPT.

Finally, learning about Chat GPT is important because it has the potential to revolutionise the way we interact with technology. As

AI continues to advance, Chat GPT is likely to become more sophisticated and capable of generating even more realistic and useful responses. By learning how to use Chat GPT effectively, readers can take advantage of this cutting-edge technology and explore new possibilities for communication and problem-solving.

CHAPTER

2



What is Chat GPT?





# What is Chat GPT?

Chat GPT is an artificial intelligence language model developed by OpenAI that is capable of generating human-like text based on a given input. To better understand Chat GPT, it's helpful to first understand what GPT models are.

GPT stands for "Generative Pre-trained Transformer" and is a type of deep learning model that uses a neural network to generate text. GPT models are "pre-trained," meaning they are trained on massive amounts of text data before being fine-tuned for a specific task. This pre-training process allows the model to learn the underlying patterns and structures of language, which enables it to generate contextually relevant responses.

Chat GPT is the latest version of the GPT model developed by OpenAI. It is an improvement on earlier versions of the GPT model, with a larger training dataset and more advanced training techniques. Chat GPT has 1.5 billion parameters, making it one of the largest AI language models available.

## What is ChatGPT?

Chat GPT's capabilities are impressive. It can generate coherent and contextually relevant responses to a wide range of prompts, including questions, statements, and even open-ended prompts. Its responses can be tailored to a specific style or tone of writing, making it a useful tool for content creation.

OpenAI has developed several versions of the GPT model, including GPT-2, GPT-3, and more recently GPT-4. While each version builds on the previous one, there are differences in the number of parameters, training data, and capabilities. For example, GPT-3 has significantly more parameters than GPT-2, which allows it to generate more diverse and complex responses.

In summary, Chat GPT is an advanced AI language model that uses deep learning techniques to generate human-like text based on a given input. It is part of the family of GPT models developed by OpenAI, and its capabilities continue to evolve as the technology advances.



CHAPTER

3



How Chat GPT Works





# How Chat GPT Works

Chat GPT is an artificial intelligence language model that uses deep learning techniques to generate human-like text based on a given input. To understand how Chat GPT works, it's helpful to have a basic understanding of the technology behind it.

Chat GPT was developed by OpenAI, a research organization that focuses on developing advanced artificial intelligence.

To train the model, OpenAI used a massive dataset of text from the internet, including books, articles, and websites. This dataset was used to pre-train the model, allowing it to learn the underlying patterns and structures of language.

## How ChatGPT Works

The architecture of Chat GPT is based on a neural network, which is a type of machine learning algorithm that is modelled after the structure of the human brain. Specifically, Chat GPT uses a type of neural network called a transformer, which is designed to process sequential data such as text.

When given a prompt, Chat GPT first processes the input using natural language processing (NLP) techniques. NLP is a branch of artificial intelligence that focuses on processing and understanding human language. It involves breaking down text into its individual components, such as words and phrases, and analyzing their meaning and context.

Once the input has been processed, Chat GPT uses its neural network to generate a response. The model is designed to predict the most likely next word or phrase based on the input and its previous training. It then generates the response based on this prediction, and repeats the process to generate a longer, more coherent response.

The key to Chat GPT's success is its ability to generate contextually relevant responses based on the input. This is achieved through its large training dataset, advanced neural network architecture, and sophisticated natural language processing techniques.

# conclusion

## CHAPTER 3

### In Conclusion:

In summary, Chat GPT is an AI language model that uses deep learning techniques to generate human-like text based on a given input. It works by processing the input using natural language processing techniques, and then generating a response based on its predictions and previous training. Its architecture is based on a neural network, specifically a transformer, and its success is due to its large training dataset and advanced processing techniques.



CHAPTER

4



Understanding Chat  
GPT's Output





# Understanding Chat GPT's Output

Once you've input a prompt into Chat GPT, the model generates a response that is designed to be contextually relevant and similar in tone and style to human-generated text. In this chapter, we'll explore the output generated by Chat GPT, how it is generated, and how you can better understand and interpret it.

One way that Chat GPT generates text is through probability and sampling methods. Essentially, the model uses probabilities to determine the likelihood of certain words or phrases being used in a particular context. It then uses sampling methods to select the most likely word or phrase to use in its response. This means that the output generated by Chat GPT is not pre-determined, but rather generated in real-time based on the input and the model's predictions.

## Understanding Chat GPT's Output

For example, if you input the prompt "What is the meaning of life?" into Chat GPT, the model might generate a response like "The meaning of life is subjective and varies from person to person. Some believe it is to find happiness, while others believe it is to serve a higher purpose." The output generated by Chat GPT is designed to be contextually relevant and similar in tone and style to human-generated text.

It's important to note that while Chat GPT can generate text that is contextually relevant and similar to human-generated text, it's not perfect. Sometimes, the output generated by Chat GPT can be nonsensical or irrelevant to the input prompt. It's important to use critical thinking skills to evaluate the output generated by Chat GPT and determine whether it is useful or not.

In summary, Chat GPT generates text using probability and sampling methods based on the input prompt and the model's training. While the output generated by Chat GPT is designed to be contextually relevant and similar in tone and style to human-generated text, it's not perfect and should be evaluated critically.



CHAPTER

5



How to Use Chat GPT  
Effectively





# How to Use Chat GPT Effectively

Now that you understand how Chat GPT works and how to interpret its output, it's time to explore some tips and best practices for using it effectively. By following these strategies, you can maximize the potential of Chat GPT and achieve better results in your use cases.

## Select and Format Input Text Strategically

The input prompt you provide to Chat GPT is critical for generating useful and contextually relevant output. To select the best input prompt, consider the following:

## Be Specific

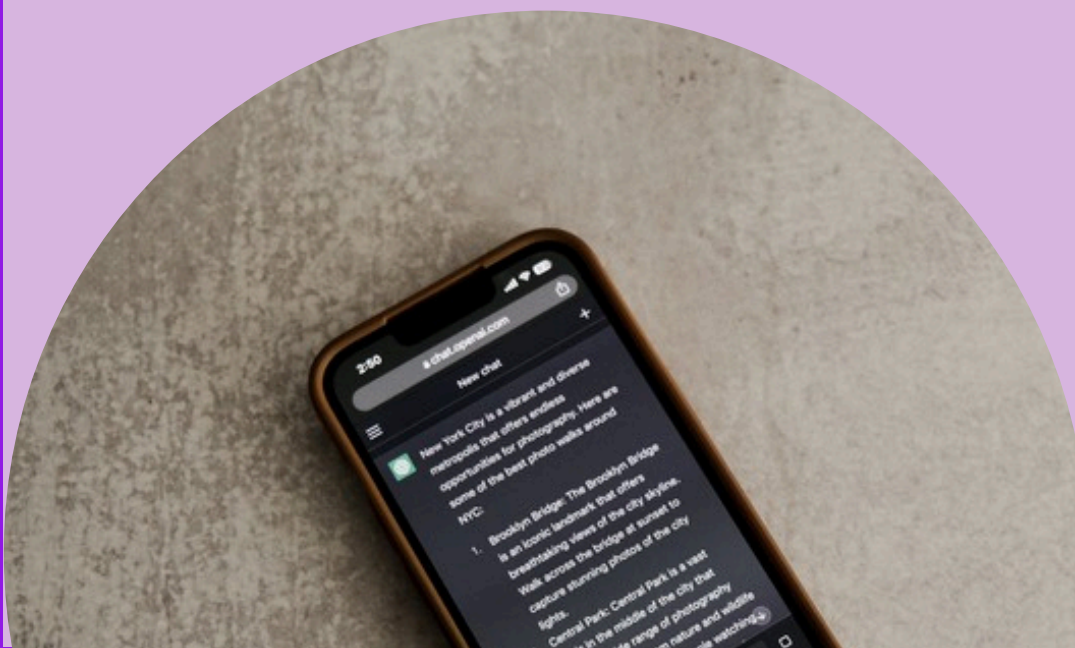
The more specific and focused your input prompt is, the better the chances of generating useful output. For example, "What is the best way to market a small business on social media?" is more specific than "How do I market my business online?"

## Be Clear

Avoid using ambiguous language or phrases that could be interpreted in multiple ways. Chat GPT may generate irrelevant or nonsensical output if the input prompt is unclear.

## Provide Context

When necessary, provide additional context to the input prompt to help Chat GPT generate more accurate output.



## Fine-Tune the Model for Specific Use Cases

Chat GPT is a powerful tool that can be fine-tuned for specific use cases. Fine-tuning involves retraining the model on a specific dataset to generate output that is more specific and relevant to your use case. To fine-tune Chat GPT, consider the following:

### **Collect data**

Gather a large dataset of text that is relevant to your use case.

### **Clean the data**

Clean the dataset by removing irrelevant or duplicated text.

### **Train the model**

Use the cleaned dataset to train the model on your specific use case.

### **Evaluate and adjust**

Evaluate the output generated by the fine-tuned model and adjust as necessary to achieve better results.



## Evaluate the Output Critically

As mentioned earlier, the output generated by Chat GPT is not perfect and should be evaluated critically. To evaluate the output, consider the following:

### Check for Accuracy

Does the output answer the input prompt accurately and comprehensively?

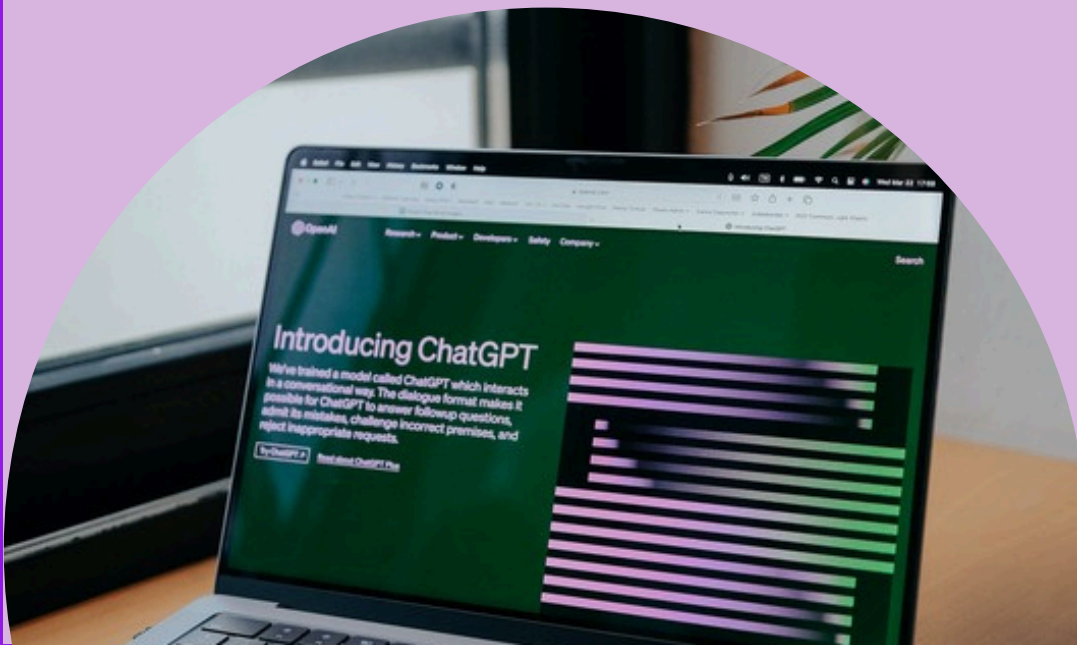
### Check for Relevance

Is the output relevant to your use case and context?

### Check for Coherence

Does the output make sense and flow logically?

By following these tips and best practices, you can use Chat GPT more effectively and achieve better results in your use cases.



CHAPTER

6



Applications of Chat  
GPT





# Applications of Chat GPT

Chat GPT has a wide range of applications across various industries and use cases. In this chapter, we'll explore some examples of how Chat GPT is used, as well as how it can be used for business and personal purposes.

## Examples of Chat GPT Applications

### **Customer Service**

Chat GPT can be used to provide automated customer service, where customers interact with a chatbot that is powered by Chat GPT. The chatbot can answer frequently asked questions and provide solutions to common problems.

### **Content Creation**

Chat GPT can be used to generate content such as articles, blog posts, and social media captions. By providing an input prompt and fine-tuning the model, Chat GPT can generate unique and contextually relevant content.

## Language Translation

Chat GPT can be used for language translation, where input text is translated into another language.

## Personal Assistants

Chat GPT can be used to create personal assistants that can help with tasks such as scheduling appointments, setting reminders, and sending messages.

## Business and Personal Uses of Chat GPT

### Marketing

Chat GPT can be used for marketing purposes, such as generating social media captions or creating product descriptions.

### Writing Assistance

Chat GPT can be used as a writing assistant to generate ideas, provide inspiration, and improve writing quality.

### Educational Purposes

Chat GPT can be used for educational purposes, such as generating study materials, answering questions, or providing feedback.

### Personal Use

Chat GPT can be used for personal purposes, such as creating unique content for social media or generating ideas for creative projects.

## Limitations and Considerations

### **Bias**

Chat GPT may contain biases based on the dataset it was trained on, which can lead to inaccurate or inappropriate output.

### **Quality of Output**

The output generated by Chat GPT may not always be of high quality, and it may require additional editing or refinement.

### **Privacy Concerns**

Chat GPT relies on access to large datasets of text, which may raise privacy concerns.

### **Legal Considerations**

The use of Chat GPT may raise legal considerations, such as copyright infringement or plagiarism.

By understanding these limitations and considerations, you can use Chat GPT more effectively and responsibly in your business or personal use cases.



CHAPTER

7



Ethical Considerations





# Ethical Considerations

As with any technology, there are ethical considerations that should be taken into account when using Chat GPT. In this chapter, we will explore some of the most important ethical considerations to keep in mind when using this powerful tool.

## Explanation of Ethical Considerations

One of the most important ethical considerations when using Chat GPT is the potential for harm. The model can generate text that is harmful, offensive, or misleading if it is not used carefully. It is important to consider the potential consequences of the text that the model generates and to ensure that it is used in a responsible and ethical way.

## Potential Biases and Discrimination

Another ethical consideration when using Chat GPT is the potential for biases and discrimination. Because the model is trained on large amounts of data, it can learn biases that exist in that data. For example, if the data is biased against a particular group of people, the model may learn to generate text that is also biased against that group.

To avoid these issues, it is important to carefully select the data that is used to train the model and to regularly monitor its performance. Additionally, it is important to test the model with a diverse range of input text to ensure that it is not biased against any particular group.

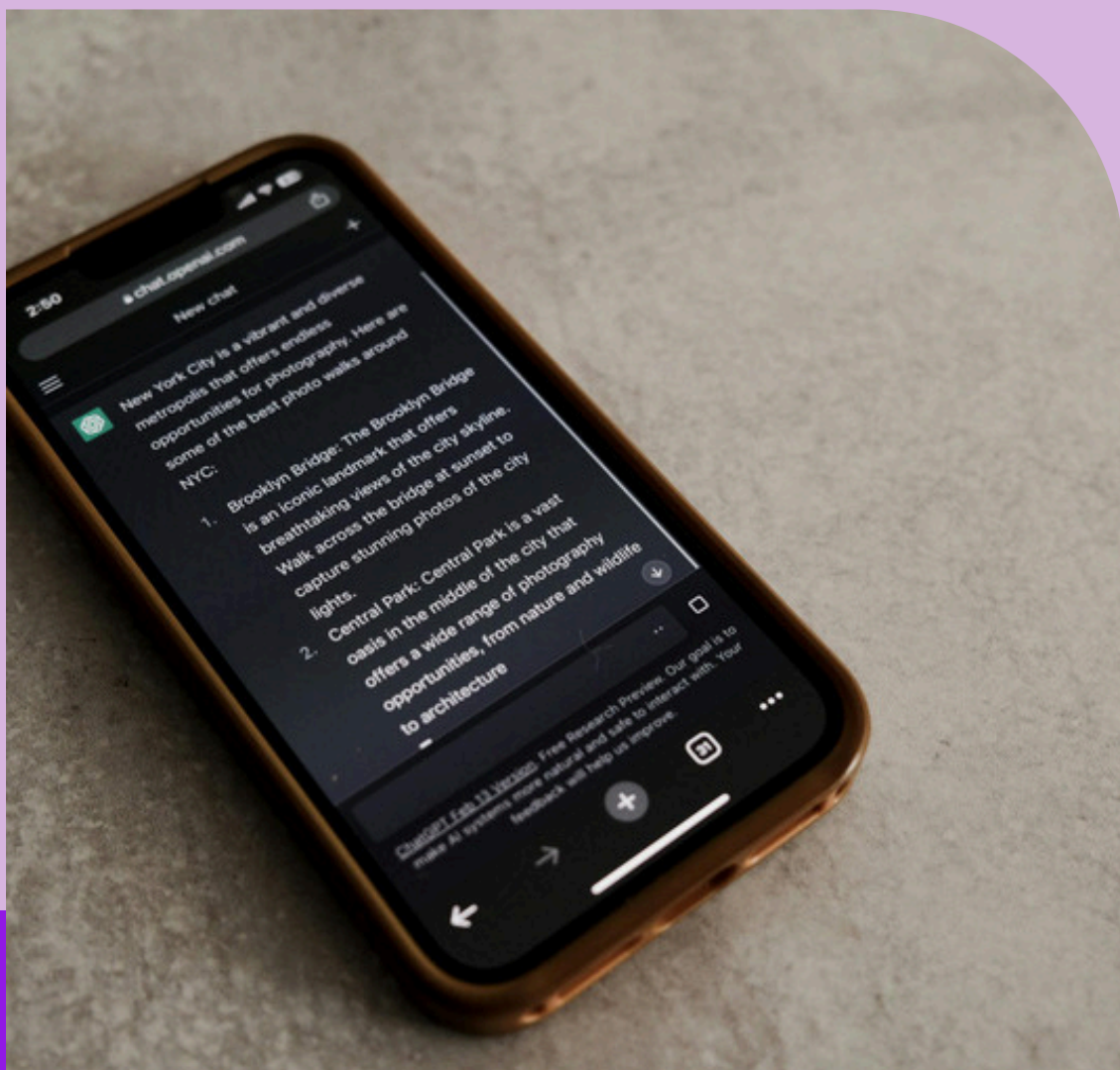
## Tips for Responsible Use of Chat GPT

To ensure that Chat GPT is used in a responsible and ethical way, there are several tips to keep in mind. First, it is important to carefully select the data that is used to train the model and to regularly monitor its performance. This can help to identify any biases or issues with the model before they become a problem.

Additionally, it is important to test the model with a diverse range of input text to ensure that it is not biased against any particular group. Finally, it is important to consider the potential consequences of the text that the model generates and to use it in a responsible and ethical way.

## In Conclusion:

Chat GPT is a powerful tool that has the potential to revolutionise the way we communicate with machines. However, it is important to use it in a responsible and ethical way to avoid any potential harm or unintended consequences. By keeping these ethical considerations in mind, we can ensure that Chat GPT is used for good and not for harm.



CHAPTER

8



Getting Started with  
Chat GPT





# Getting Started with Chat GPT

Now that you have a basic understanding of what Chat GPT is and how it works, you may be ready to start using it for your own purposes. In this chapter, we'll discuss the steps required to get started with Chat GPT, as well as the tools and resources available to you.

## Choose Your Framework

The first step to getting started with Chat GPT is to choose a framework that you will use to interact with the model. Some popular frameworks include:

### **Hugging Face Transformers**

A popular open-source library for natural language processing that includes pre-trained GPT models and tools for fine-tuning them.

### **OpenAI GPT-3 API**

A powerful cloud-based API that provides access to OpenAI's pre-trained GPT-3 models.

### **GPT-3 Sandbox**

A web-based platform that allows you to experiment with GPT-3 models in a user-friendly environment.

## Choose Your Use Case

Once you have chosen a framework, the next step is to decide on a specific use case for Chat GPT. This could include generating text for marketing materials, creating chatbots for customer service, or even generating creative writing. It's important to choose a use case that is well-defined and specific, as this will help you to fine-tune the model more effectively.

## Gather Your Data

To fine-tune the model for your specific use case, you will need to gather a dataset of text that is relevant to your task. This could include customer feedback, product descriptions, or any other relevant text that will help the model learn to generate the type of text you are looking for.

## Fine-Tune the Model

With your dataset in hand, you can now begin the process of fine-tuning the Chat GPT model for your specific use case. This process involves training the model on your dataset, which allows it to learn the patterns and structures of the text you are interested in generating.

## Evaluate and Refine

Once you have fine-tuned the model, it's important to evaluate its performance and refine it as needed. This may involve adjusting the dataset or fine-tuning the model parameters to improve its accuracy or generate more natural-sounding text.

## Tools and Resources

There are a variety of tools and resources available to help you get started with Chat GPT, including:

### **Hugging Face Transformers documentation and tutorials**

An extensive collection of resources for working with pre-trained GPT models and fine-tuning them for specific use cases.

### **OpenAI API documentation and developer resources**

A collection of tools and resources for developers working with the OpenAI GPT-3 API.

### **GPT-3 Sandbox tutorials and guides**

A user-friendly platform that provides a range of resources for working with GPT-3 models.

# conclusion 8

## In Conclusion:

Getting started with Chat GPT can be a complex process, but with the right tools and resources, you can start generating high-quality text for your business or personal needs. By following the steps outlined in this chapter, you can begin exploring the possibilities of this powerful natural language processing technology.



CHAPTER

9



Conclusion



# Conclusion

Congratulations! You have reached the end of "The Beginner's Guide to Using Chat GPT." We hope that this e-book has provided you with a comprehensive understanding of Chat GPT and how it can be used effectively.

To summarise, we have covered the basics of Chat GPT, including its definition, capabilities, and how it works. We have also discussed how to understand and use Chat GPT's output, strategies for using the model effectively, and applications of Chat GPT in various industries. Additionally, we have touched upon ethical considerations when using Chat GPT and how to get started with the model.

As you have learned, Chat GPT has vast potential for various business and personal applications. However, it is crucial to approach its use with responsible ethics and understanding its limitations.

We encourage you to continue your learning and exploration of Chat GPT and its capabilities. OpenAI and other resources have many tools available to help you explore the model further and discover new ways to utilize its power.



# The Beginners Guide to Using ChatGPT

